

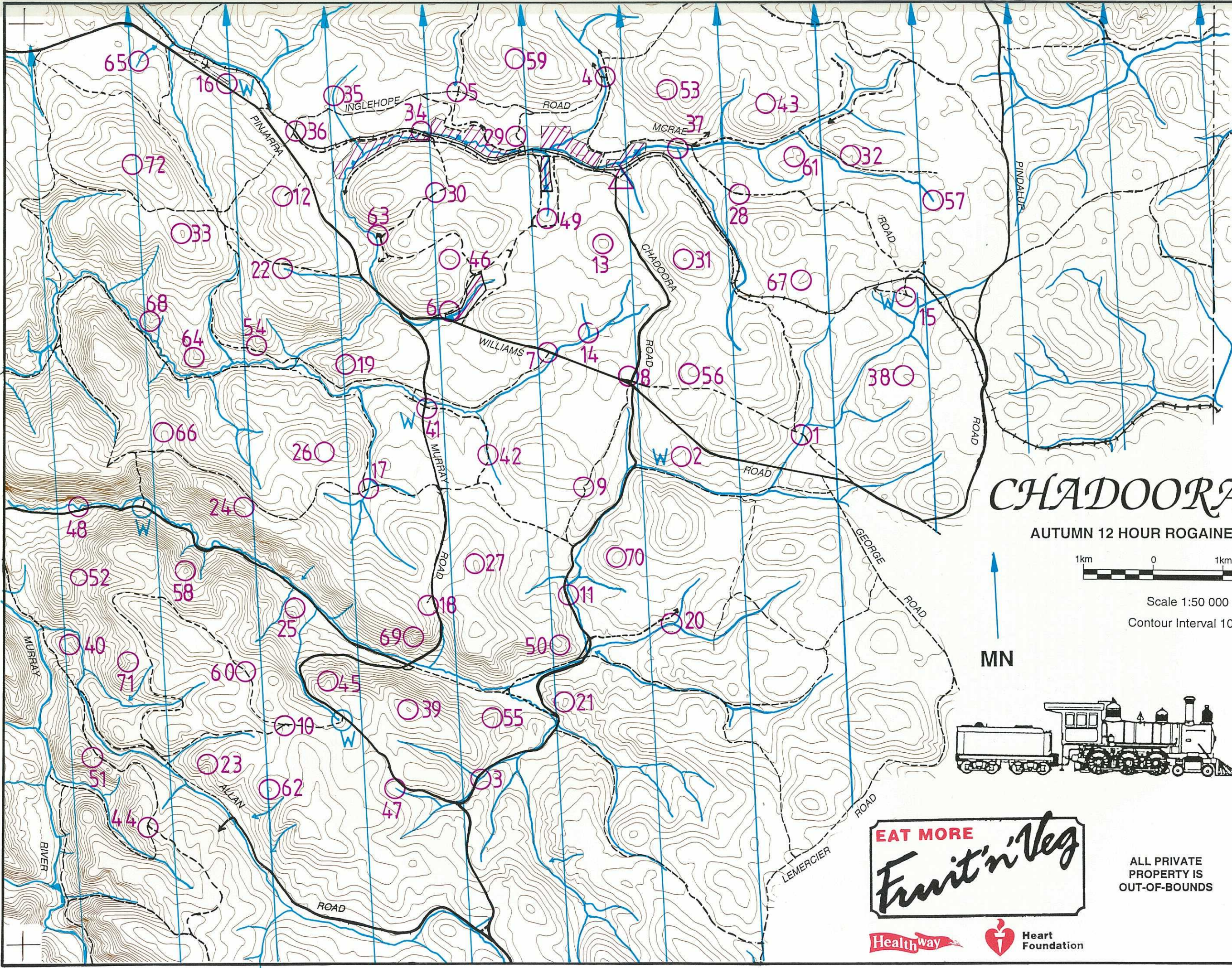
Setters
Nick Acquarola
Dianne Challen
Ray Challen

Vetters
Jennifer Benn
David Sands

The following are thanked for assistance in setting this event:
Brian Austin; Marty Stamatis (DOLA); and Department of Conservation and Land Management.

Topographic information reproduced with permission of DOLA.

Possession of this map does not confer right of entry.



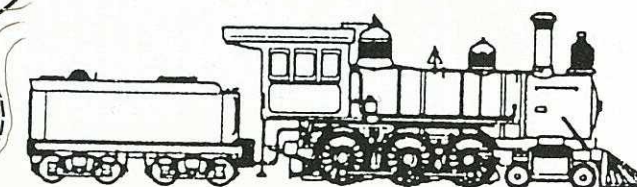
CHADOOKA MILL

AUTUMN 12 HOUR ROGAINE: APRIL 20 1996



Scale 1:50 000
Contour Interval 10 m

MN



LEGEND

- Road
- Track
- Powerline
- Railway
- Watercourse
- Dam
- Contours
- Control
- Hash House
- Water Drop
- Out of Bounds



ALL PRIVATE
PROPERTY IS
OUT-OF-BOUNDS



CHADOORA MILL

WARA AUTUMN 12 HOUR ROGAINE: APRIL 20 1996

No.	Points	Description	No.	Points	Description
1	20	The track - watercourse intersection.	37	60	The watercourse junction.
2	20	The gully: On an indistinct track.	38	60	The broad spur.
3	20	A pond (Mosquito Swamp).	39	60	The summit.
4	20	The eastern track junction: Then 25 m @ 25°.	40	60	The summit, north west end.
5	20	The track intersection.	41	60	The overgrown track.
6	20	A gate: Then 50 m @ 35°.	42	60	The watercourse: Intersection with an overgrown track.
7	20	A waugal: Then 50 m @ 250°.	43	60	The saddle: On an overgrown track.
8	20	A plantation: South east corner then 27 rows @ 24° then 23 trees @ 275°.	44	60	The track junction.
9	20	The track bend.	45	60	The spur, upper part.
10	20	The track junction.	46	60	The knoll.
11	20	A 50 m x 50 m bare rock surface, the eastern edge.	47	60	The head of the watercourse.
12	20	A 250 m x 250 m revegetated gravel pit, north west corner.	48	60	The watercourse bend.
13	30	The summit.	49	70	The gully: On an overgrown track.
14	30	The watercourse: Intersection with an overgrown track.	50	70	The spur, upper part.
15	30	A 150 m x 200 m clearing, south edge.	51	70	The saddle.
16	30	The landing ground, south east end.	52	70	The saddle.
17	30	The track - watercourse intersection.	53	70	The gully: On an overgrown track.
18	30	A 50 m x 15 m clearing, south edge.	54	70	The spur.
19	40	The summit.	55	80	The spur: Next to a blazed tree.
20	40	A stream gauging station: Then 50 m @ 155°.	56	80	The spur.
21	40	The knoll.	57	80	The head of the watercourse: On an overgrown track.
22	40	The gully, upper part.	58	80	The knoll.
23	40	The head of the gully.	59	80	The gully, upper part.
24	40	The spur, lower part.	60	80	The track: In the shallow saddle.
25	40	A pine plantation, south east corner.	61	90	A shallow saddle.
26	40	The saddle.	62	90	The summit.
27	40	The summit.	63	90	The gully: On an overgrown track.
28	40	The track, on the ridge.	64	90	The summit, south west side.
29	40	The track bend.	65	90	The shallow gully.
30	40	The track, on the ridge.	66	90	The spur, upper part.
31	50	The summit.	67	100	The spur: On an overgrown track.
32	50	The head of the gully.	68	100	The spur.
33	50	The summit.	69	100	The spur, upper part.
34	50	The railway-watercourse intersection, on a culvert.	70	100	The summit.
35	50	The watercourse.	71	100	The head of the gully.
36	50	A 20 m x 20 m clearing, north edge.	72	100	The saddle.